



神州中医药大学

Shenzhou Open University
of Traditional Chinese Medicine



Study guide

招生简章 Studiegids 2023-2024



Educational programme

Foundations of Chinese Medicine

Acupuncture

Herbal Medicine

Tuina

Foundation of Western Medicine

Introduction

Being a student at Shenzhou Open University of TCM means studying at one of the most influential institutes of Traditional Chinese Medicine in the Netherlands.

Our three-years English TCM-programmes, combined with our one-year Western medicine programme, have been fully accredited by the independent accreditation organization SNRO, with 240 EC according to the newest higher professional education standards.*

In 2017 Shenzhou became an International Education Base of WFAS (World Federation of Acupuncture and Moxibustion Societies), the only one in the Netherlands.

Choose Shenzhou Open University of TCM to open up new horizons for your future career.

**Subject to changes in regulatory and/or changes in conditions and policies of the accreditation organizations and professional TCM associations from time to time.*

2-27

简介

成为神州中医大学的学生意味着您在欧洲最具影响力的中医大学学习和深造。

我们的教学和培训得到了荷兰及欧洲相关国家中医药专业学会的认可。一年制的西医基础学教育获得了荷兰辅助医学教育权威独立评估机构 CPION40学分的认证, 所有学科达到最新的荷兰HBO应用型大学学士水平的教育标准。

2017神州中医大学成为荷兰唯一一家世界针灸联合会认定的国际教育培训基地。

选择神州中医大学, 为您的未来人生开创新天地。

**具体认证评估将根据认证机构和专业学会有关条例和规定改变而不断更新。*

28-51

Director's Letter

Thank you for your interest in Shenzhou Open University of TCM. Founded in 1990, Shenzhou University of Traditional Chinese Medicine is one of the largest teaching institutions in Europe specialized in cultivating Chinese medicine professionals. For more than 30 years since its establishment, the school has trained thousands of Chinese medicine professionals with the motto of “adhering to tradition and promoting innovation”, which has won praise from all walks of life and is known as “the cradle of Chinese medicine in Europe”.

We learn from the talent training model of Chinese medicine universities in China, combine European characteristics, rationally optimize the teaching syllabus, and create a series of high-quality courses in traditional Chinese medicine, acupuncture, massage, and western medicine with a first-class team of teachers.

Our teaching and training have been recognized by the professional associations of traditional Chinese medicine in the Netherlands and European countries. After graduation, students can legally engage in relevant work in the professional field in the Netherlands and some European countries. Our teaching mode, curriculum design and training experience have been widely praised by the community, and have been replicated and referenced by many Chinese medicine schools in the Netherlands, Europe and the world.

We have tailored our courses to students' needs, by designing them according to a part-time model, enabling you to study alongside your job and family commitments. Our professional doctors of Chinese Medicine teach medical knowledge and also pay attention to work safety during clinical practice. Care is also given to shape students' professional behaviour during practice, as well as responsibilities and compassion for the patient. We strive to teach our students to have a high standard of ethics and safety when working in their future profession.

At Shenzhou Open University of TCM, we aspire to create an authentic atmosphere during your classes and clinical apprenticeship.

As Director of CMC Tasly Group, I pledge to provide you with the environment needed to help you flourish. Your choice to study Chinese Medicine at Shenzhou Open University of TCM is a bridge to a new stage of your life.



Zhilin Dong, Founder of CMC Tasly Group and Shenzhou Open University of Traditional Chinese Medicine



Index

Vision and Mission	4
Board and Staff	5
Accreditation	5
Study process	6
Lecture days	6
Education Structure	7
Foundations of Chinese Medicine	8
Acupuncture	10
Chinese Herbal Medicine	12
Tuina Chinese medicinal massage	14
Foundations of Western Medicine	16
Our Lecturer and Clinical supervisor team	18
Study material and study books	20
Practical training and Externships	22
Continuing training and Seminars	23
Tuition fee, Exam fee and Payments	23
Admission	25
Contact	26

Vision and Mission

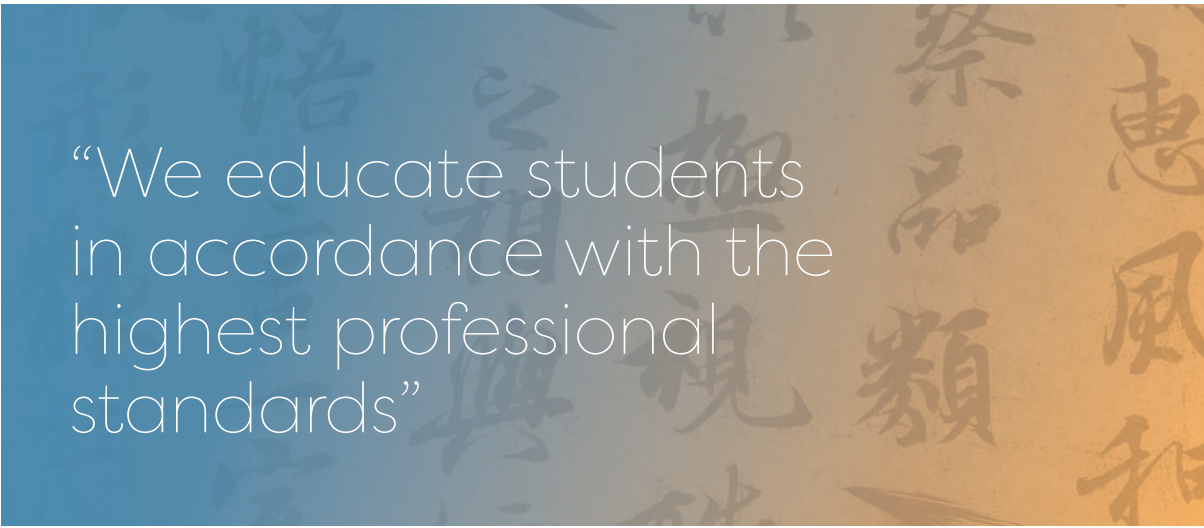
The mission of Shenzhou Open University of Traditional Chinese Medicine (TCM) is to educate students in accordance with the highest professional requirements. We prepare our future clinicians by practising patient centred medicine and helping them to identify the fundamental questions in the mechanism, prevention and treatment of disease as well as teaching the basic concepts of Chinese Medicine and Western Medicine.

Shenzhou Open University of TCM offers various courses as well as internships and has a diversity of international students and staff members. We encourage mutual respect among the lecturers, students, staff, trainees and patients whilst demanding high standards of ethical and professional conduct.

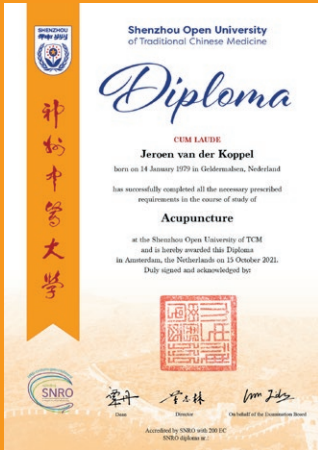
Shenzhou Open University of TCM is the academic leader in TCM undergraduate and professional furtherance of education in the Netherlands and Europe. With this, Shenzhou Open University of TCM makes a positive contribution to our community in the field of prevention, safety and effectiveness of the treatment of disease.

In order to achieve this, we evaluate the professional level of all our courses for constant improvement. During the academic year, teachers and students are able to give feedback by filling out evaluation forms.

We tailor our courses according to both our own high standards and to the standards of the professional associations to ensure continued accreditation of our courses.



“We educate students
in accordance with the
highest professional
standards”



Board and Staff

Director

Zhilin Dong

Academic Dean

Dan Tan

Study Coordinators

Rob van Hees

Jun Huang

Examination Committee

Jidong Wu, PhD TCM, senior Lecturer

Toine Korthout, MD, senior Lecturer

Mei Long, Independent external examiner

Accreditation

All our English TCM-programmes have been fully accredited by the independent accreditation organisation SNRO with 200 EC according to the newest higher professional education standards (HBO). Together with our SNRO and CPION accredited Western Medicine courses this leads to a total of 240 EC. This enables our graduates to operate at a similar level as HBO bachelor graduates in the Dutch health care system as well as being able to give VAT-free health treatments.

The educational programme of Traditional Chinese Medicine at Shenzhou Open University of TCM has been accredited by the related professional associations* in the Netherlands including: NVA, NAAV, ZHONG, TCMned, LVNT, NWP and FAGT.

**Subject to changes in regulatory and/or changes in conditions and policies of the accreditation organizations and professional TCM associations from time to time.*

Furthermore, we are a member of the “Federatie van Opleidingen in de Natuurlijke Geneeswijzen” (FONG), the “Collectief Geaccrediteerde Opleidingen” (CGO) and are registered at the “Centraal Register Kort Beroepsonderwijs” (CRKBO). The latter implies that no VAT is added to our tuition fee.

The above makes Shenzhen Open University of TCM a very influential institute of Chinese Medicine in the Netherlands.

Study process

Language and Communication

In order to be able to attend classes, a professional level of the English language is required.

Please provide us with your current e-mail address for our staff to communicate with you. You must have basic computer skills to enable you to study on-line, type reports, etc.

Attendance and Study Load

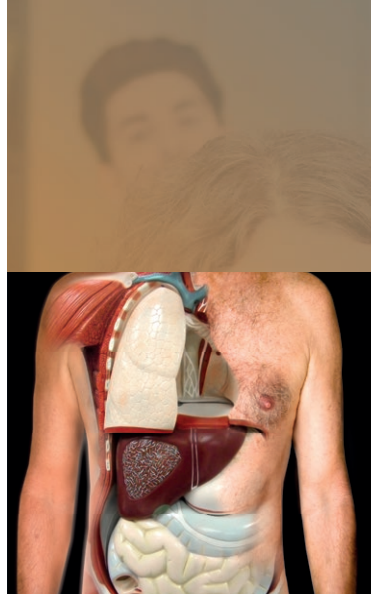
We highly value the educational contact between teacher and student, therefore student's attendance of a minimum of 80% of the lectures is mandatory for all our courses. Besides attending classes (12 hours per month), students are required to do self-study, participate in study groups and apprenticeship with a total of about five times the number of contact hours.

Lecture days

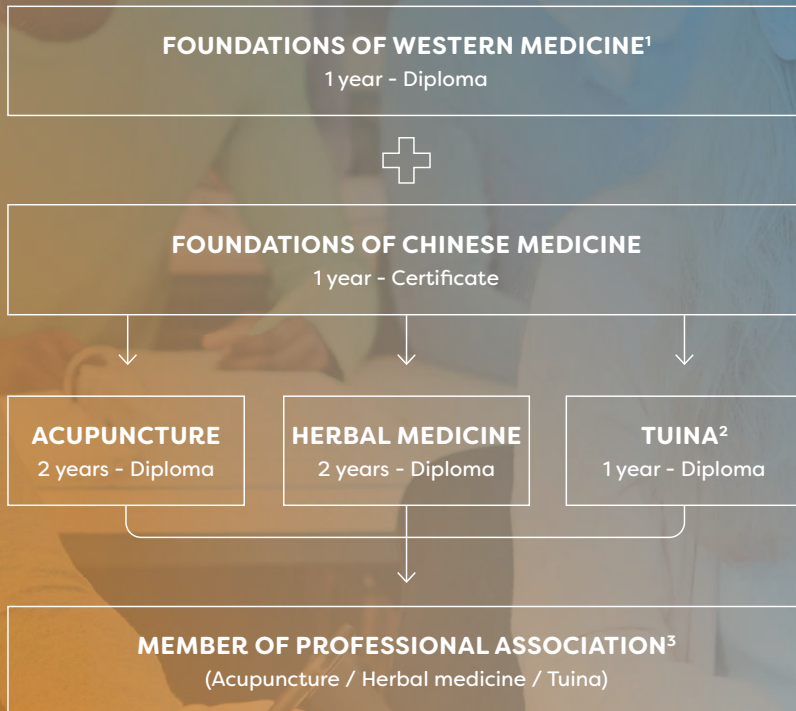
The 20 lecture days of the TCM courses are scheduled in 10 blocks and are given approximately once per month on Saturdays and Sundays (with occasional exceptions). In addition, the TCM study includes practical days under the supervision of a teacher on weekdays, which students can sign up for.

The 23 lecture days of the WM courses are scheduled on Fridays and Saturdays or Saturdays and Sundays.

All schedules will be published on the website from May 2023.



Education Structure



- 1 Exemption is granted to medical doctors, physiotherapists and other medical professionals with a so called 'BIG registration' meeting the PLATO requirements and for those who possess an equivalent foreign diploma which was accredited by 'Internationale Diplomawaardering'. The Western Medicine curriculum can be followed before or in parallel to the TCM programme.
- 2 The first year of the Tuina course matches the first year of the Acupuncture course.
- 3 Each Professional Association has its own regulations and demands. Please direct your questions to the association.

Some courses may be taken in parallel, but the school cannot guarantee that there is no overlap in class dates. Please check before enrolling for two courses during the same academic year.

Foundations of Chinese Medicine

During this course students are taught the basic concepts of traditional Chinese medicine and are introduced to Chinese philosophy which forms the cornerstones of TCM. This part of your studies is the necessary foundation to be able to study further, specializing in Acupuncture, Chinese Herbal Medicine or Tuina.



ACCREDITED BY SNRO

DURATION: 1 YEAR

TUITION FEE: € 2.100,-

The course, Foundations of Chinese Medicine, consists of basic theories such as Yin Yang and Five Elements, Zang Fu theory, TCM etiology, pathology and diagnosis. This class is an important bridge from theory to clinic.

In addition to the teacher contact hours you will work together with your fellow students in a Literature study group and practise together in a Practice group. On top of that students can sign up for 5 practical days under supervision of a teacher. Already after a few months of theoretical training you can start to do apprenticeships in our clinic or at one of the external clinics approved by Shenzhou Open University of TCM.

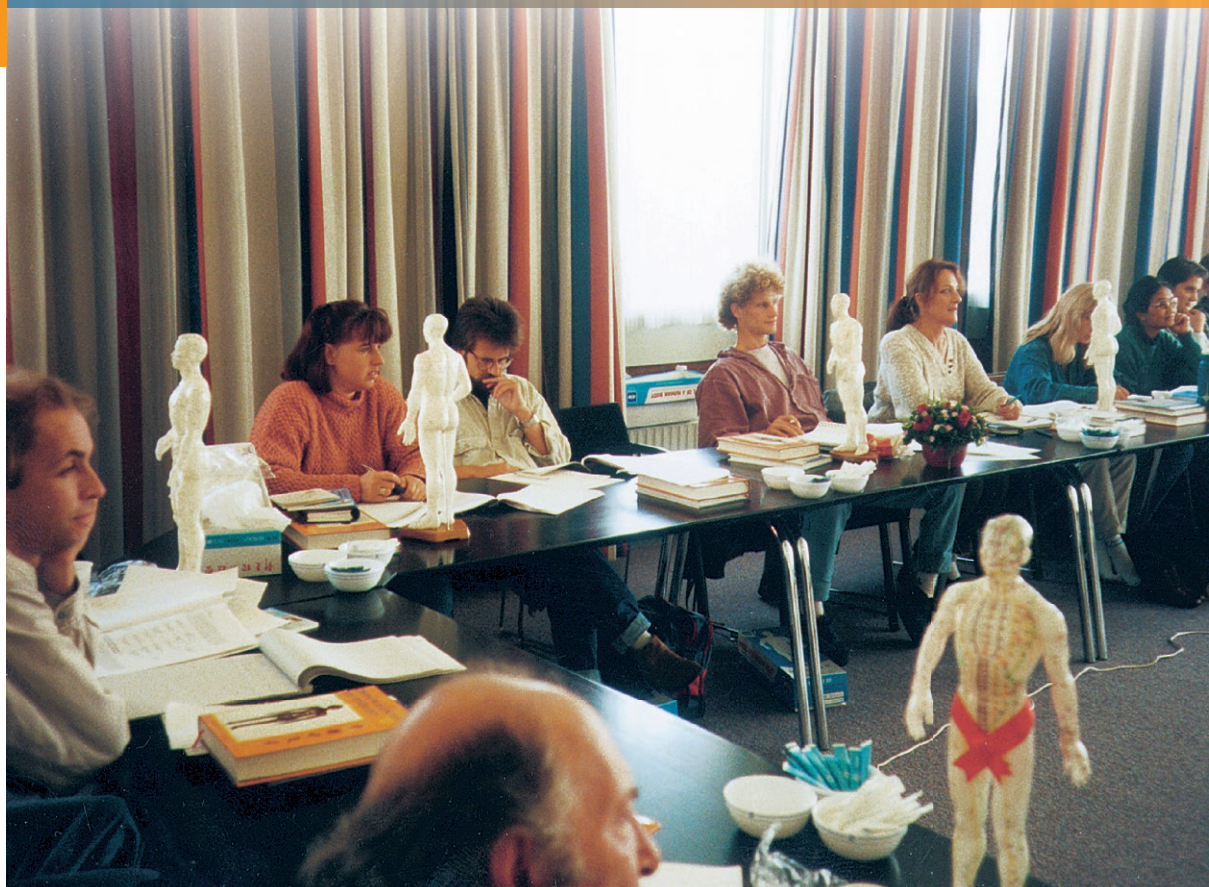
Subjects

- Basic Characteristics of Chinese Medicine
- Yin and Yang
- Five Elements
- Zang Fu Organs
- Qi, Blood and Body Fluids
- Constitution (body types) in TCM
- Etiology and Pathogenesis of Chinese Medicine
- Tongue diagnosis
- Pulse diagnosis
- Other diagnostic methods
- Pattern Identification: 8 principles, Pathogenic factors
- Pattern Identification: Zang Fu Organs
- Pattern Identification: Qi, Blood and Body Fluids
- Pattern Identification: 6 stages, Triple Burners and 4 levels
- Establishing contact with the patients: attitude of the therapist



Acupuncture

This vocational training course in acupuncture prepares students for their career as acupuncturists at a professional level. Students are introduced to the classical methods of TCM as well as the modern developments of TCM.



ACCREDITED BY SNRO WITH 200 EC (INCLUDING FCM)

ADMISSION REQUIREMENT: FOUNDATIONS OF CHINESE MEDICINE

DURATION: 2 YEARS

TUITION FEE: € 2.100,- PER YEAR

Every lesson weekend includes both theory and practice. In addition to the teacher contact hours, you will work together with fellow students in study groups and do internships in a clinic. On top of that, you can sign up for 10 practical days per year under supervision. During these two years of the acupuncture course, the number of apprenticeship hours will gradually be increased to help you practise independently in your future TCM career.

Subjects of the 1st year Acupuncture course

During first year, the focus will be on the meridians and acupuncture points as well on needling techniques.

- History of Acupuncture and Moxibustion
- Introduction to meridian systems
- Theories of the “Specific Acupuncture Points”
- Essential knowledge of meridians and acupuncture points including fourteen meridian pathways; location, functions and clinical indications of commonly used acupuncture points
- Acupuncture needling techniques
- Moxibustion and Cupping
- Ear-, Scalp-, Electro Acupuncture
- Basic acupuncture point combinations

Subjects of the 2nd year Acupuncture course

In the second year, the emphasis is laid on analyzing and treating diverse and common syndromes seen in clinical practice. Besides theoretical knowledge, case studies and demo patients will be discussed in class as well. Students are required to write a thesis before completion of their final year.

- General introduction to Acupuncture therapeutics and principles
- Acupuncture treatments for a wide range of clinical conditions, such as mental-emotional conditions, neurological conditions, musculoskeletal & painful conditions, genitourinary conditions, gynaecological conditions, skin conditions and paediatric conditions etc.
- ‘Walk steadily over the bridge’: from class to clinic



Chinese Herbal Medicine

The herbal medicine class introduces students in the knowledge of Chinese herbs and trains them to run a practice independently as well as to work safely, competently and effectively.



ACCREDITED BY SNRO WITH 200 EC (INCLUDING FCM)

ADMISSION REQUIREMENT: FOUNDATIONS OF CHINESE MEDICINE

DURATION: 2 YEARS

TUITION FEE: € 2.100,- PER YEAR



In China, the study of herbal medicine is integrated in TCM education. Acupuncture therapy and Chinese Herbal Medicine when combined, not only complement each other, but also reinforce each other.

In the West, students often embark on this course after the completion of the acupuncture course. The advantage then is that Chinese medical concepts are already integrated, making the study of Chinese herbs more tangible.

In addition to the teacher contact hours, you will work together with fellow students in a Literature study group and practise together in a Practice group. During the first year of the Herbal Medicine course, the apprenticeship takes place mainly at the herbal department preparing herbal prescriptions. In the second year it is possible to do your apprenticeship at herbal specialists. Finally students will write a thesis to complete their course.

Subjects

- Basic theory, concepts, properties and taste of single herbs
- Single herbs, herbal formulas and their functions
- Chemistry, pharmacology and guidelines for safety use of Chinese herbs
- Quality assurance of Chinese herbs, European regulations, forbidden animal and botanical medical substances in Europe
- Principles of prescribing herbal formulas
- Administering of herbs
- Differentiation and treatment of various diseases
- 'Walk steadily over the bridge': from class to clinic

Tuina

Chinese medicinal massage

During this course students are taught different techniques and applications of Tuina massage. This ancient technique of manipulation, originating in China, is applicable to treating various diseases. A solid knowledge of meridians and acupoints is necessary. Tuina massage is suitable for all adults and works especially well for children.



ACCREDITED BY SNRO WITH 200 EC (INCLUDING FCM)

ADMISSION REQUIREMENT: FOUNDATIONS OF CHINESE MEDICINE

DURATION: 1 YEAR

TUITION FEE: € 2.100,-

After completing the Foundations of Chinese Medicine, this Tuina course is for two years. If you have completed the first year of Acupuncture, or the entire Acupuncture course, you can immediately begin in the second year.

During the Tuina classes at least 50% of the time is spent on practical training. Students are required to practise the Tuina techniques further with fellow students during the interactive practice. The clinical apprenticeship enables students to learn from experienced Tuina therapists. Students are required to write a thesis to finish their final year.

Subjects of the 1st year of Tuina course

- History of Acupuncture and Moxibustion
- Introduction to meridian systems
- Theories of the “Specific Acupuncture Points”
- Essential knowledge of meridians and acupuncture points including fourteen meridian pathways; location, functions and clinical indications of commonly used acupuncture points
- Acupuncture needling techniques
- Moxibustion and Cupping
- Ear-, Scalp-, Electro Acupuncture
- Basic acupuncture point combinations

Subjects of the 2nd year of Tuina course

- Introduction to history, principles and theories of Tuina therapy
- Tuina manipulation techniques
- Paediatric Tuina: specific points used for children
- Paediatric Tuina: specific manipulations techniques used for children
- Tuina treatments for adults with various diseases
- Tuina treatments for children with various diseases
- ‘Walk steadily over the bridge’: from class to clinic



Foundations of Western Medicine

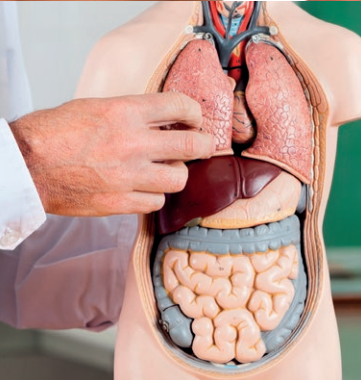
This intensive training in Western medicine is designed for anyone who is studying physically based complementary medicine in order to gain knowledge in anatomy, physiology and pathology at a professional level.



**ACCREDITED BY SNRO AND CPION ACCORDING TO PLATO REQUIREMENTS
WITH 40 EC**

DURATION: 1 YEAR

TUITION FEE: € 2.100,-



In addition to anatomy and pathology, the curriculum also includes topics such as medical ethics, health law, pharmacology and psychosocial topics which are in line with modern medical practice.

The education here is characterised by a lively, interactive teaching method. After presenting the theory, work is done in subgroups to consolidate the curriculum. Students give presentations on a chosen subject and they practise with diagnostic skills.

The curriculum is set up according to the so-called PLATO standards, drawn up by Dutch health insurers. These standards are regularly updated to stay in line with the requirements of the professional situation. This programme is accredited by SNRO and CPION.

Subjects

- Medical ethics and the Dutch health care system
- Basics: Cytology, Embryology and Body tissues
- Integumentary system; skin
- Skeleton & Muscles
- Blood & Immunity
- Heart & Blood vessels
- Lungs & Respiration
- Digestive system
- Urinary tract
- Nervous system
- Endocrine system & Hormones
- Female and male genital systems, breast diseases, sexually transmitted diseases
- Nutrition, metabolism & temperature regulation
- Infectious and parasitic diseases
- Anamnesis, inspection and physical examination
- Applied psychology
- Psychopathology
- S.O.L.K.
- Psychopharmaceuticals
- Medical and psychosocial signals, 'red flags'

Our Lecturer and Clinical supervisor team

All lecturers at Shenzhou Open University of TCM have a rich experience in both clinical practice and education. All our lecturers from China have a TCM degree from a university and a medical licence issued by China's Ministry of Health. They have also received the qualification from the Ministry of Education in China to teach at university-level. To ensure the high quality of our education, the lecturers are supported by our administration staff, study coordinators and the clinical training team.

Academic Dean



Dan Tan

Shenzhou Clinical Supervisor Team

L.P. Zhao

Q.T. Nguyen

X. Yang

J. Huang

Herbs supervising team

L. Wang

L. Zhou

H. Meng

C.L. Yuan

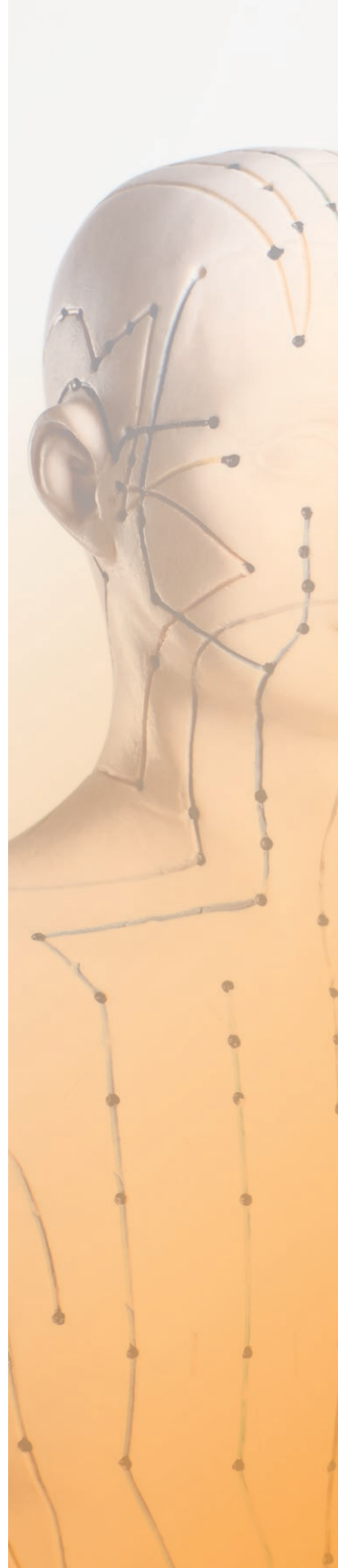
Jingjing Sun

Clinic Receptionists

Yuni Harnani

Yongmei Chen

Alson Yuen



Teacher team Traditional Chinese Medicine



Baoshun Shi



Beate Lendt



Cheng Qian



Daisy Yang



Dan Tan



Huijun Shen



Jidong Wu



Jun Huang



Linjun Xia



Mei Xing



Ricky Bochem



Shulan Tang



Tianrong Ren



Tiejun Tang



Zhigang Yang

Teacher team Western Medicine



Lili Huang



Susan Liu



Toine Korthout



Yun Ding



Zhi Li

Study material and study books

Students have to purchase a number of books and for Western Medicine, a mandatory reader. Extended hand-outs will be distributed during the course via the student-site.

Below, only the mandatory study books are listed. After registration you will also receive a list of books which are optional.

Please do not purchase books from this list before your registration. After your registration our study coordinators will inform you about the most recent list of mandatory books with additional information such as edition and ISBN numbers!

Foundations of Traditional Chinese Medicine

- Essentials of Chinese Medicine: Volume I, Z.W. Liu

Acupuncture

- A Manual of Acupuncture, Peter Deadman
- The practice of Chinese Medicine, Giovanni Maciocia
- The Practical Application of Acupuncture and Moxibustion (hand-outs), Shenzhen Open University of TCM

Herbal Medicine

- Chinese Herbal Medicine, Materia Medica and Chinese Herbal Medicine, Formulas & Strategies (two volumes), Dan Bensky
- The Practice of Herbs and Formulae (hand-outs), Shenzhen Open University of TCM
- Chinese Herbal Medicines: Comparisons and Characteristics, Yifan Yang
- Chinese Herbal Formulas: Treatment Principles and Composition Strategies, Yifan Yang



Tuina

- Tui Na: A Manual of Chinese Massage Therapy, *Sarah Pritchard*
- hand-outs, *Shenzhou Open University of TCM*

Foundations of Western Medicine

Anatomy and Physiology:

- Human Anatomy & Physiology, *Elaine N. Marieb & Katja Hoehn*
- Readers, *Shenzhou Open University of TCM*

Psychology:

- Reader Psychology, based on the book: Psychology, the Science of Mind and Behaviour (N. Holt, A. Bremner, E. Sutherland, M. Vliek, M. Passer & R. Smith), *Shenzhou Open University of TCM*

Pathology:

- Readers, *A.C.F.M. Korthout*
- Underwood's Pathology; A Clinical Approach, *Simon S. Cross*



Practical training and Internships

After completion of the Foundations of Chinese Medicine year, students will be trained in case analysis, acupuncture techniques or Tuina manipulation, depending on the course of their choice. In addition, Shenzhou provides practice classes guided by professional teachers for current students (TCM courses). Students need to complete extended mandatory clinical training as well. The total number of internship hours for a three-year TCM study is 300 hours.

The clinic

Shenzhou offers a unique opportunity to all students of Shenzhou Open University of TCM by letting students complete a number of their apprenticeship hours in our affiliated clinic as part of their course without any additional payment. Our practitioners of Chinese Medicine at Shenzhou clinic have a broad experience in the areas of Acupuncture, Tuina and Herbal Medicine.

External apprenticeships

Students of Shenzhou Open University can also choose to do a part of their apprenticeship with external TCM practitioners who have been accredited by Shenzhou Open University.

International Apprenticeships

Students can opt to do a part of their internships at clinics abroad which are approved by Shenzhou Open University of TCM. Prior permission from the study coordinators is required.

Apprenticeships In China

Shenzhou has established partnerships with the World Federation of Acupuncture and Moxibustion Societies (WFAS) (Beijing), as well as various traditional Chinese medicine universities in Guangzhou and Wenzhou. During the study, or after graduation, if students wish to practice in China, Shenzhou can assist in contacting the WFAS affiliated and teaching hospitals of various Chinese medicine colleges and universities in Guangzhou and Wenzhou for internship (internship fees are at your own expense).



Continuing training and Seminars

Shenzhou Open University of TCM frequently organizes seminars with a broad choice of topics of excellent quality.

New developments in TCM and topics suggested by our participants, motivate us to continually search for new interesting subjects for our seminars. In order to give our students and alumni the opportunity to engage with the newest TCM topics and developments, we often invite well-known doctors and professors coming from China, Europe and the U.S.A.

All our seminars are accredited by the relevant professional associations and are advertised in Dutch TCM magazines and websites under 'nascholingen'. You can find the seminar programme and status of accreditation at our website www.shenzhou-university.com. If you would like to receive notifications about our upcoming seminars, you can subscribe to our newsletter.

Tuition fee, Exam fee and Payments

The costs for your first registration as a student of Shenzhou is € 95,-. The tuition fee is € 2.100,- per year.* If you do two courses in one year, (provided the schedule allows it, e.g. a TCM course and the Western Medicine course) you will need to pay the tuition fee twice.

It is not possible to take a two-year course in one academic year (e.g. Acupuncture 1st year and 2nd year).

For the supervised practical days for which you can register, there is a separate financial arrangement of €10 per practical day.

Handouts are included in the tuition fee whereas books and certain readers are not included.

**This is the tuition fee for the academic year of 2023-2024.
Tuition fees in ensuing years may be adjusted from time to time.*

Exam fee for students of Shenzhen

The first exam and first re-exam are without any extra costs. The costs for a second re-take exam are € 100,-.

External candidates

- Evaluation exam for entering Shenzhen: € 100,-
- Evaluation exam for TCM professional associations: € 300,-

Payments

Students who are admitted to the course and are registered successfully will receive an invoice. The invoice has to be paid within 30 days according to our 'Payment and registration conditions Courses' but no later than the start of the course. Partial payment is not possible. Late payments will be charged with € 50,- administration costs.

Cancellation

We only accept cancellations in written form. If cancelled up to 14 days before the commencement of the course, only the registration costs will be charged. If cancelled within 14 days before the start of the course, 50% of the tuition fee will be charged. There is no refund for cancellations after the course has already begun.

Refunds

With exception of the cancellation policy, tuition fees will not be reimbursed, except in extreme cases where participants are unable to attend the course due to serious accidents, illness or death. In those cases, the participant or legal representative can request a refund from the office in writing up to three weeks after the start of the course.

Registration costs are not refundable after two weeks of student's registration.

Please read our "Payment and registration conditions Courses" on our website under "Payment and registration conditions Courses".



Admission

Educational Requirements (minimum level)

- Dutch HAVO or MBO-4 diploma
- A secondary school diploma equivalent to the Dutch HAVO.

Registration is by means of

- A completed registration form
- A recent representative portrait photo
- Copies of diplomas and certificates, and others relevant to the admission.

You can register online: www.shenzhen-university.com

If you have completed a TCM education elsewhere and would like to transfer credits to Shenzhen Open University of TCM please consult the study coordinators.

Registration costs

Upon your first registration at Shenzhen, registration costs of € 95,- will be charged. You will need to register anew for each academic year but you will only need to pay for the registration costs once.

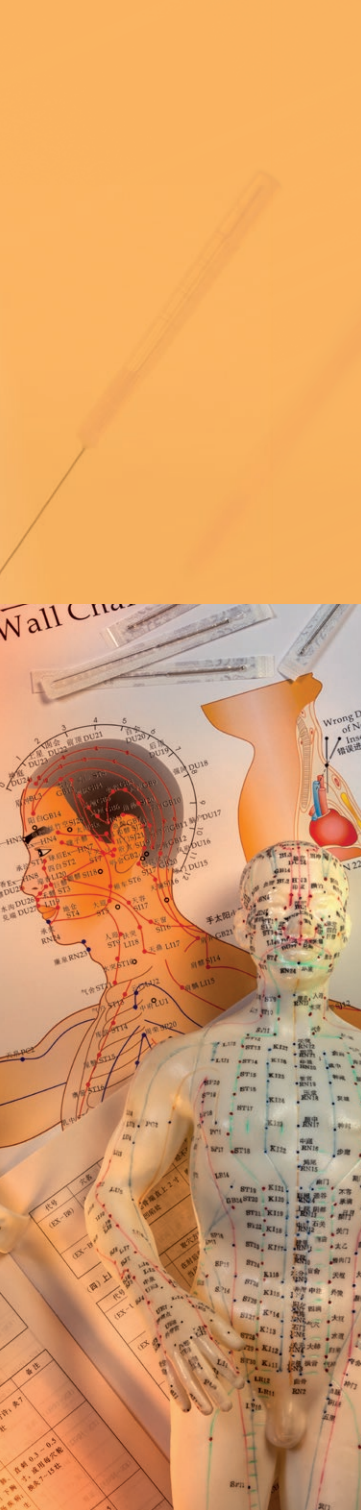
Registration date

We advise you to register **before 15th of July 2023**.

For registration after this date, please contact the study coordinators to find out if participation is still possible. Depending on the number of registrations, the school reserves the right to a cancel a course or offer it in a following academic year.

Unforeseen changes

Shenzhen Open University of TCM reserves the right to amend the educational requirements, its study programme and its policies due to unforeseen changes.



Contact

The Admissions Office can be contacted from Monday until Saturday between 10.00 and 12.00 and between 14.00 and 16.00.

Study coordinators:

■ Rob van Hees : rob@shenzhou.com

■ Jun Huang : jun@shenzhou.com

Academic Dean of Shenzhou Open University:

■ Dan Tan : dean@shenzhou.com

General e-mail : info@shenzhou-university.com

Mail address : Geldersekade 67, 1011 EK Amsterdam

Telephone : 020-6235060 (reception desk)

Shenzhou Open University (direct): 020-6203371

www.shenzhou-university.com





董事长致辞

神州中医大学创建于1990年，是全欧洲最具规模的专门培养中医药专业人才的教學机构之一。建校30多年来，以“秉承传统，发扬创新”为校训，培养了数以千计的中医药专业人才，深得社会各界好评，被誉为“欧洲中医的摇篮”。

我们借鉴中国国内中医药大学的人才培养模式，结合欧洲本土特色，合理优化教学大纲，以一流的师资队伍，打造中医中药、针灸、推拿、西医基础等系列精品课程。

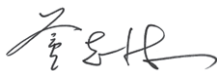
我们的教学和培训得到了荷兰及欧洲相关国家中医药专业学会的认可，教学模式、课程设计和培养经验得到社会广泛赞誉，被荷兰、欧洲和世界众多中医学校学习和借鉴。

我们所有的课程都是非全日制教育，确保您能够将工作、家庭和学习三者兼顾。我们的授课教师不仅向学生传授医学知识，还指导其临床安全操作规范。我们强调职业素养，使学生明确对患者的责任。我们努力教导所有的学生以合乎职业和伦理道德的安全方式开始他们未来的职业。

中医与中国传统文化及哲学密切相关。传承中国传统文化对学生们更清楚地理解中医大有裨益。

神州中医大学努力营造一个传统与现代相互交融、轻松活泼、治学严谨的课堂气氛和学术氛围。

作为大学的创始人和集团的董事长，我很高兴有机会向您展示我们拥有的一切成果，尽力为您提供学业和未来事业的蓬勃发展所需的内外环境，选择在神州中医大学学习，将为您未来事业的成功搭建一个崭新的桥梁。



董志林

创始人兼董事长



索引

理念和使命 30

机构组成、员工和考试委员 31

教育认证 31

学习守则 32

授课时间安排 32

课程结构 33

课程名称:中医学基础 34

课程名称:针灸学 36

课程名称:中草药学 38

课程名称:推拿学 40

西医学基础(包括心理学) 42

授课和临床带教老师 44

教材及其他推荐书籍 46

教学见习和实习 47

职业培训和进修课程 47

学费、考试费等规定 48

招生条件 49

联系信息 50

理念和使命

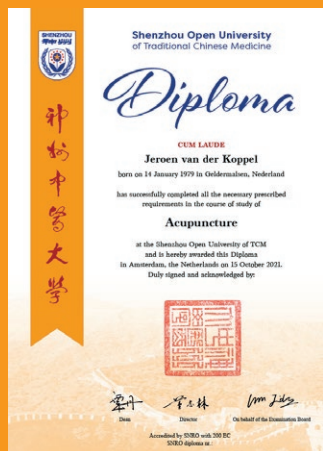
神州中医大学的使命是按照最高的专业标准教育学生,使其成为一名具有高专业水准,为患者提供健康服务的中医从业者。

为了实现这一目标,为保持所有课程的专业水平,我们定期进行教学评估,并通过问卷等方式从教师和学生那里得到反馈,以其不断提高教学水平。

我们鼓励教师、带教老师、工作人员和学生的多样性,提倡教师、带教老师、学生和工作人员之间的相互尊重,以及追求学生和患者之间在伦理道德以及职业道德上的最高标准。

神州中医药大学作为荷兰以及欧洲的中医本科和专业继续教育的学术表率,同时在中医药的临床医疗和服务、公共卫生和预防以及社区服务等方面有所建树。

神州中医药大学全心致力于
以最高的专业标准教育学生



机构组成、员工和考试委员

教务处主任：谭 丹

教务处：黄俊 Rob van Hees

考试委员会：

吴继东 龙梅 Toine Korthout

教育认证

神州中医药大学三年制的中医教育和一年制的西医基础学教育均达到最新的荷兰HBO应用型大学水平的教育标准。荷兰毕业生无需经过额外专业考试可直接加入专业学会，享受医疗保险的医疗费用退还政策和治疗费增值税豁免待遇。

神州中医药大学的各项教育课程目前得到了众多荷兰中医药专业学会的认可，其中包括NVA (荷兰针灸协会) 和TCMned (荷兰华人中医药学会)。具体情况视各学会政策的改变而定。

此外，您的学费无需缴纳增值税。

神州中医药大学是欧洲最具影响力的中医教学机构之一。



学习守则

基本要求

1. 学生必须具备足够的中文的水平，能熟练听，说，读，写中文。
2. 具备简单的电脑使用技能，能使用微软办公软件，会上网查询资料，查收邮件，利用相关软件完成各类学习任务，如做作业及写论文等。

出勤率和自学时间

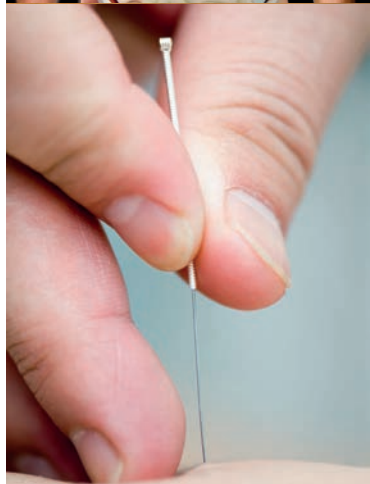
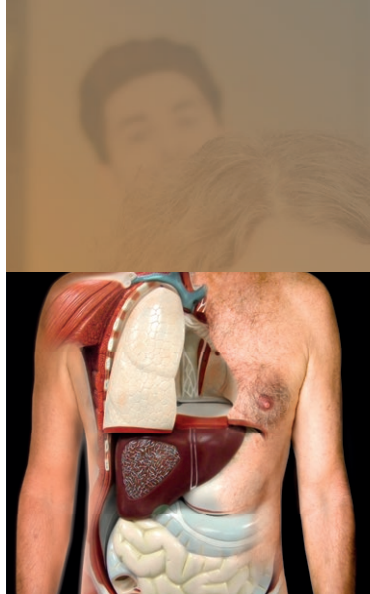
为了保证学习质量，我们要求学生的最低出勤率不得低于 80%，学生自学和实习时间为课堂教学时间的5倍。

授课时间安排

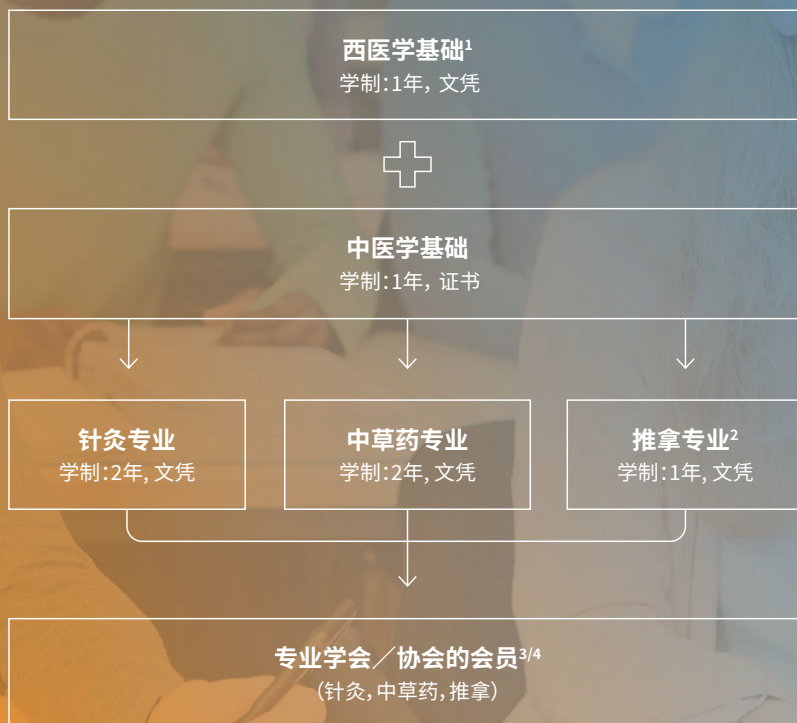
中医课程每学年二十天，每月一个周末（星期六和星期天，偶尔有例外）。此外，学校还在工作日提供有老师指导的练习课，学生可报名参加。

一年的西医课程安排了二十三天，每月一个周末（星期六和星期天，偶尔会有例外）。

所有课程安排将于2022年5月在网上公布。



课程结构



1. 医生, 理疗医师和其他接受符合PLATO and Terms 医学专业人士并持有BIG登记, 以及外国文凭获得相关机构认证的例外。
2. 推拿课程的第一年与针灸课程的第一年相匹配。
3. 每个专业学会会有不同的规则和要求, 详情请和他们直接联系。
4. 各专业学会有权从患者利益和安全性出发, 制定相关语言要求。

有些课程的平行学习是允许的, 但是学校不能保证避免所有上课日期的重复, 请务必自己确认。



课程名称 中医基础学

目的是向学生提供未来从事针灸、中药
或推拿专业所需要的足够中医基础理论
和诊断学知识。



学制：一年

学费：€ 2.100,-

介绍中医的基础理论知识, 包括中医理论体系的形成和发展、基本特点、阴阳五行学说、藏象学说、精气血津液、经络学说、体质学说、病因病机学说、防治原则以及中医的各种诊断方法。中医基础学是学习针灸、推拿、中药等课程的必修课。

除了上课的时间以外, 学校还提供在校教室5天练习课。另外, 学生需要参加理论学习小组, 互动练习小组以及临床见习和实习等活动, 以此为您进一步学习其他中医课程打下坚实基础。

课程的主要内容：

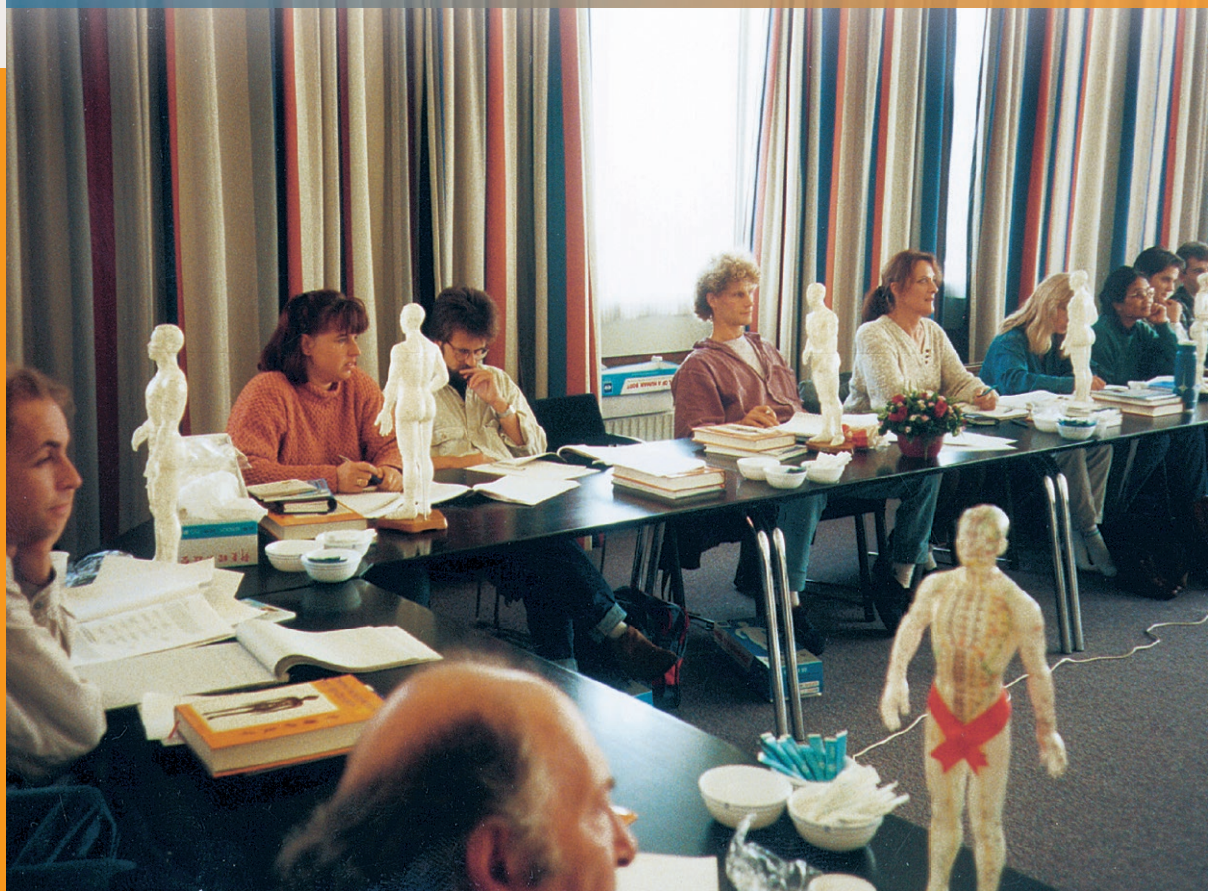
- 中医学的基本概念
- 阴阳学说
- 五行学说
- 藏象
- 气、血、津液
- 中医体质
- 病因和病机
- 舌诊
- 脉诊
- 其他 诊断方法
- 八纲和病因
- 藏象辨证
- 气血津液辨证
- 六经／三焦／卫气营血辨证
- 如何开始良好的医患交流





课程名称 针灸学

针灸学是中国医学的重要组成部分,课程内容包括
经络、腧穴、针灸方法、艾灸、拔罐、耳针、头针、
临床常见多种疾病的治疗。



学制：二年

每年学费：€ 2.100,-

学生在完成中医基础学课程的基础上，继续进行针灸经络、穴位和针灸技术等知识的学习和培训。

除了上课的时间以外，学校还提供在校教室20天练习课（每学年10天）。另外，学生需要参加理论学习小组，互动练习小组以及临床见习和实习等活动，通过两年期间的学习，为您顺利毕业后能独立从事临床工作打下基础。

第一学年课程的主要内容：

- 针灸基础理论
- 经络系统概论
- 特穴理论
- 经络和穴位的基本知识，包括14条经络路径；常用穴位的位置、功能和临床适应症
- 针刺技术
- 灸法和拔罐
- 头针、耳针和电针法
- 基本穴位组合

第二学年课程的主要内容：

- 针灸治疗总论
- 针对以下疾病类别的针灸治疗：
 - 精神疾病
 - 神经疾病
 - 泌尿生殖系统疾病
 - 肌肉骨骼和疼痛
 - 免疫疾病和过敏症
 - 胃肠和呼吸道疾病
 - 皮肤病
 - 耳鼻喉科疾病
 - 妇科疾病
 - 儿科疾病
 - 其他常见病，包括慢性疲劳综合症和戒断综合征
- 如何成为一名合格的针灸师





课程名称 中药学

学生在完成中医基础学课程的基础上,继续进行中药、方剂以及内科治疗学的学习和培训。课程内容包括中药学和方剂学的概念、目的与方法、中药方剂的药性和治病的机理,中药配伍的目的和应用规律等。



学制:二年
每年学费: € 2.100,-

本课程同时适合于已经取得针灸师和推拿师资格者继续学习深造。

一年级的学生主要在中药房实习,熟悉常用中药方剂的配伍,二年级的学生主要跟随临床医生实习。

除了上课的时间以外,学校还提供在校教室10天(中药二年级)练习课。另外,学生需要参加理论学习小组,互动练习小组以及临床见习和实习等活动,通过两年期间的学习,为您顺利毕业后能独立从事临床工作打下基础。

课程内容:

- 药材的性味
- 方剂配伍原则
- 中药和方剂
- 化学与药理学的概念
- 中药的安全使用指南
- 欧洲法规、禁止使用受保护的濒危野生动植物物种
- 疾病的鉴别和治疗





课程名称 推拿学

本课程的重点是推拿手法基本训练，
成人和儿童常见的疾病治疗。

*学生必须在完成中基和针灸一年级课程学习的基础上才能报读推拿专业。



学制:一年

每年学费: € 2.100,-

在推拿课上,至少有50%的时间是用于实践练习。学生需要在不断的互动练习中提高各种推拿技术,进而提高临床操作技能。临床见习能让学生跟随有丰富临床经验的推拿治疗师学习对各种疾病的推拿治疗。

课程主要内容:

- 推拿疗法的历史、原理和理论简介
- 推拿手法
- 推拿疗法在成人各种疾病中的应用
- 小儿推拿:适用于儿童的特殊穴位和特殊手法
- 推拿治疗:小儿临床常见的各种疾病
- 推拿疗法:如何成为一名合格的推拿医生





西医基础学 (包括心理学)

高强度的西医学课程向同学们介绍人体解剖学、生理学和病理学知识以及心理学知识。西医课程还包括关于最新添加的项目,如医学伦理学、医疗卫生法规、药理学和心理学等。



荷兰CPION 40EC认证

学制: 1 一年

学费: € 2.100,-

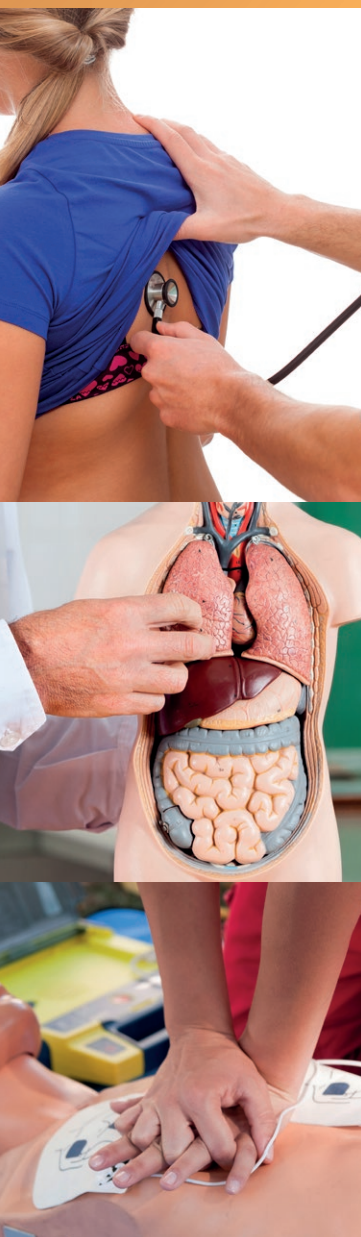
除了解剖学和病理学, 课程还包括符合现代医疗实践的医德、卫生法、药理学和心理社会学等主题。

本课程采用活泼、互动的教学方式。老师在教授理论部分后, 学生分小组学习。学生们需要就选定的主题进行演示, 练习自己的诊断技能。该课程是根据PLATO标准设置的, 该标准由荷兰健康保险公司制定。这些标准会定期更新, 以符合专业情况的要求。该课程已获荷兰CPION认证。

课程的主要内容:

- 关于荷兰的临床医疗病历记录方面的法律法规
- 社会地图: 荷兰精神卫生保健体系及其目标
- 人体定位
- 细胞学和胚胎学的基本概念
- 组织和组织修复
- 表皮系统: 皮肤的解剖学、生理学和病理学
- 骨骼和肌肉: 解剖学、生理学、病理学
- 血液和免疫: 生理学和病理学
- 心血管: 解剖学、生理学和病理学
- 肺和呼吸: 解剖学、生理学和病理学
- 消化系统: 解剖学、生理学和病理学
- 泌尿系统: 解剖学、生理学和病理学
- 神经系统: 解剖学、生理学和病理学
- 内分泌系统和激素: 解剖学、生理学和病理学
- 营养、代谢和温度调节
- 接诊、观察和体格检查
- 感染和寄生虫病
- 男女性生殖系统生殖系统的疾病、乳房疾病和性传播疾病
- 心理学的分支: 生物、学习理论、人本主义和系统理论法
- 应用心理学; 人格发展、生命的阶段及其相关任务、精神病理学和社会、老化和死亡
- 精神病理学的概念; DSM IV 系统与 DSM V 系统的区别; 基本特征、诊断过程, 心理障碍
- 精神病药理学和精神病的诊疗: 基本概念、认知归因以及治疗的忠诚度
- 医学和心理社会的征象: Red flags

请注意: 根据有关专业学会的要求, 可能需要增加其它培训课程。西医班的学费不包含此项费用。



授课和临床带教老师

神州中医大学的针灸、中药、推拿及西医老师们均毕业于各医学大专院校，有着多年的丰富临床和教学经验。



教务主任: 谭 丹

神州临床带教老师:

黄俊 杨萱

阮国盛 赵丽平

药房实习团队:

陈亚琴

王 莉

孙晶晶

周琳琳

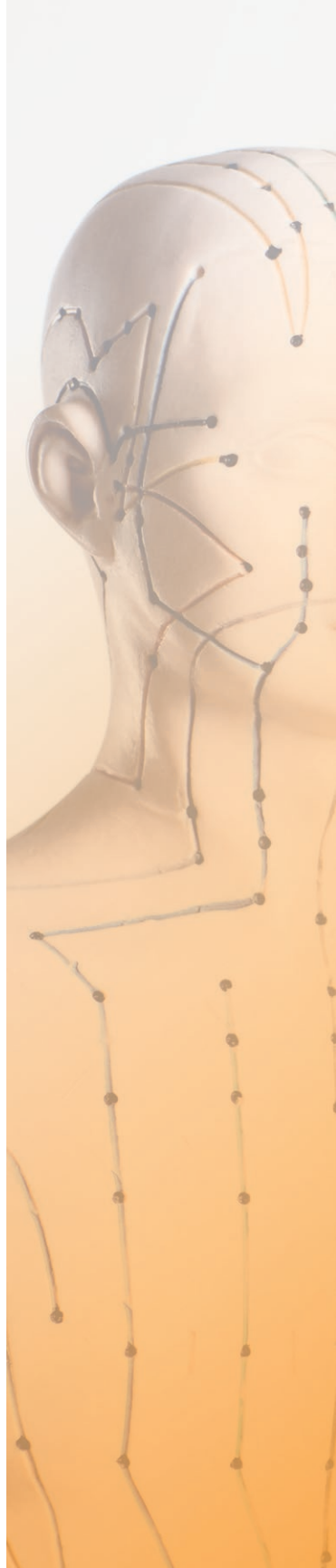
袁翠玲

临床实习协调员:

优 妮

袁慧心

陈咏梅



教学团队：

我们从全欧洲聘请了本专业领域的顶级专家和教授组成教师团队，他们既有深厚的专业理论功底、丰富的教学经验，又有数十年的临床实践经验，以此来确保我们高品质的教学活动。

中医学科教师团体



黄俊



钱成



任天荣



沈惠军



石宝顺



谭丹



汤淑兰



唐铁军



吴继东



夏林军



邢玫



杨萱



杨志刚



于福年

西医基础学(包括心理学)教师团队



丁芸



黄俐俐



李智



刘慧姣

*以上排名不分先后，按姓氏排列



教材及其他推荐书籍

推荐书目：

- 中医基础理论学
- 中医诊断学
- 经络腧穴学
- 针法灸法学
- 针灸治疗学
- 中药学
- 方剂学
- 药理学
- 推拿基础学
- 推拿临床学
- 中医内科治疗学
- 人体解剖学
- 生理学
- 内科学
- 药理学
- 临床心理学
- 医学法规
- 医学伦理学
- *诊断学
- *病理学
- *黄帝内经
- *伤寒论
- *针灸甲乙经
- *针灸大成
- *濒湖脉学
- *脉经
- *难经
- *医学三字经
- *辨舌指南
- *中医症状鉴别诊断学
- *中医制法与方剂

推荐书目有必读和选读之分，每年的教材或版本可能会有所变化，详情请等待教务秘书最后通知。

注：带*号为选读书籍



教学见习和实习

学生在神州学习的所有中医学课程都必须参加临床见习或实习，且必须完成相应数量的病历报告。

临床实习

神州医药中心门诊部为学生提供临床见习机会，学生们可以获得一定数量的免费见习机会。神州门诊部的医师和治疗师们在针灸、推拿、内科和皮肤科等领域有丰富的临床和带教经验。

校内带教练习

神州中医药大学为在校生(中医学课)提供有专业老师指导的练习课，具体课时根据课程需要安排，每次课每人收费10欧。

*本练习课为非强制性。

外部培训

本校学生还可选择经神州中医药大学认证的分布在欧洲各地的中医诊所实习。详情可在学生网页中搜索。

国际培训

神州中医药大学与世界针灸学会联合会，广州中医药大学和温州医科大学建立了合作伙伴关系，学生在毕业后，如有意愿到中国实习，神州中医药大学可协助联系世界针灸学会联合会，广州中医药大学和温州医科大学的附属和教学医院进行实习(实习费用自理)。

职业培训和进修课程

神州中医药大学常年提供各类职业培训和进修课程，目的是扩大中医药、针灸从业者和学生们的知识和技能。课程讲师皆为来自中国及西方各国的中医药界知名专家。

神州中医药大学高级进修课程得到所有荷兰主流专业学会的认证，作为继续教育学分。

具体课程请查阅学校的网站：www.shenzhou-university.com

如果想及时得到关于进修课程的信息，请在网站上留下您的邮件，我们会第一时间通知您。



学费、考试费等规定

每门课程一学年学费用为2100欧元。首次的报名费用 为95欧元(报名费不予退还)。

*如果你想同时参加两个班的学习,你必须缴纳两个班的学习费用。不允许同时就读同一个专业两个年级的课程(例如针灸1年级和2年级)

学费包括课程和教学大纲费、期中考试和期末考试费及第一次补考费,不包括课本费,其他教材费以及练习课的费用。

* 这是2023-2024学年的价格,学校有权作相应调整

考试费用

期中考试:免费 期末考试:免费。第一次补考免费。

第二次补考费用为 100欧元。

补考两次仍然没有及格者,需要接受学习能力评估。

其他考试

从外校转学加入神州中医大学的水平测试考试:100 欧元。

加入专业学会中医各专业水平考试为300欧元。

支付信息

注册入学的学员会收到财务处的发票,按照学校规定收到发票后需要30天之内付款。超出30天需要额外支付50欧元管理费。学校不接受分期付款。

课程取消

学生如需取消课程,需要通过书面或电子邮件申请。课程开始前14天取消:仅收取报名注册费。课程开始前14天内取消:收取50 % 学费。课程开始后取消:学费不予退还。

退费

学费不予退还,除非有严重事故和疾病、死亡等不可抗拒的情形,我们会酌情处理。课程开始三周后,学费不予退还。请阅读我们的网站,了解更多关于付款和退款信息。



招生条件

教育要求

- 高中毕业文凭或高中毕业学历水平
- 理疗师或其他治疗师
- HBO 护士
- 医生, 牙科医生, 专科学生
- 外籍学员持有相当于荷兰HAVO, 或 MBO-4文凭(高中毕业学历水平)

语言要求

- 熟练听, 说, 读, 写中文

报名资料

- 填写报名表(或登陆神州中医药大学网站 网上填表 www.shenzhou-university.com)
- 个人照片
- 文凭及认证复印件

*网络报名者请将您的个人照片和文凭复印件上传。

报名日期

请在7月15日之前填写好报名表并通过电子邮件、信件或面交学校教务处。如在7月15日后报名, 请与学校秘书处联系。如果因报名人数不足等不可抗拒的原因, 神州中医药大学保留暂停开班。

无法预期的改变

本招生简章中的措辞如有歧义或不明确之处, 由神州中医药大学的给予合理解释为准。

联系信息

电话联系：

周三至周六上午10点---12点，下午2点---4点（中文或英文或荷文）

周一至周六上午10点---12点，下午2点---4点（英文或荷文）

教务处工作人员：

黄俊 jun@shenzhou.com

Rob van Hees rob@shenzhou.com

公共邮件：shenzhoucoordinator@gmail.com

学校地址：Geldersekade 67, 1011 EK Amsterdam


电话号码：020-6203371（直通热线）

微信号：SOU0206203371

网站：www.shenzhou-university.com





The background of the page is a composite image. The top half shows an open book with text, slightly out of focus. The bottom half shows a variety of traditional Chinese medicine ingredients, including star anise, cinnamon sticks, and other dried herbs, resting on a rustic wooden surface.

In the event of ambiguity or unclarity in this Study Guide the wording is subjected to a reasonable interpretation thereof by Shenzhou University of Traditional Chinese Medicine.

本招生简章中的措辞如有歧义或不明确之处, 由神州中医药大学给予合理解释为准。



神州开放大学
Shenzhou Open University
of Traditional Chinese Medicine